

STAN S7

DVOETAŽNI

PRIZEMLJE

ORIJENTACIJA STANA

DVOSTRANA / SI-JZ

NETO POVRŠINA
ZATVORENOG DJELA

122,43m²

UKUPNA NETO POVRŠINA
(zatvoreno + otvoreno s koeficijentom)

Loggia: 0,75

Natkriveni balkon / terasa: 0,50

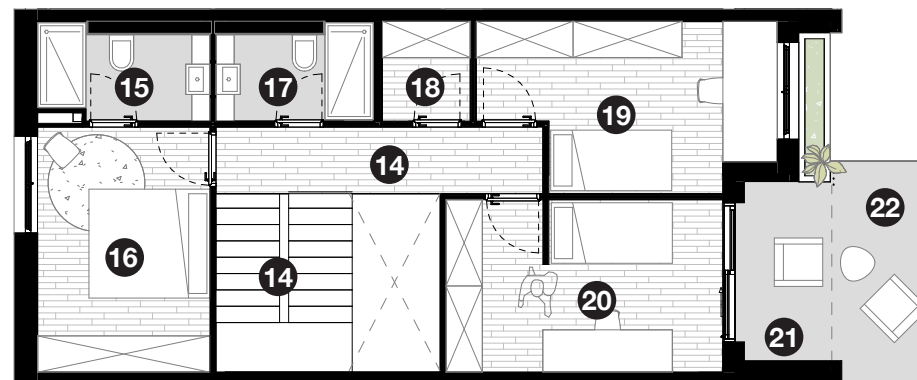
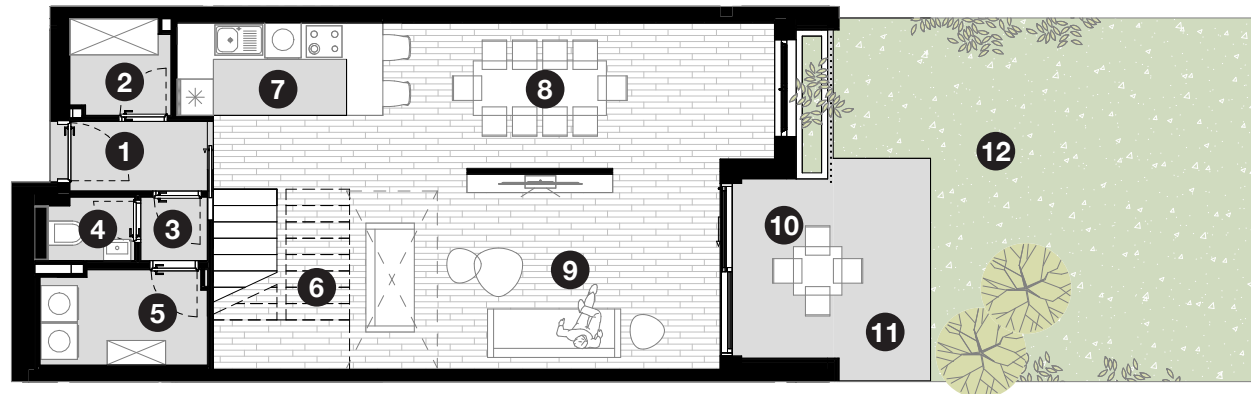
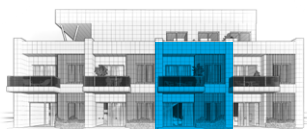
Nenatkriveni balkon / terasa: 0,25

Vrt: 0,10

139,12m²

BROJ SPAVAĆIH SOBA

3S



1 ULAZ - 2,62m ²	6 STUB. - 9,24m ²	11 NAT. TERASA - 5,56m ²	16 SOBA - 11,54m ²	21 LOGGIA - 4,76m ²
2 GARDEROBA - 2,58m ²	7 KUHINJA - 5,19m ²	12 VRT - 53,78m ²	17 KUPAONICA - 3,89m ²	22 BALKON - 5,56m ²
3 HODNIK - 1,16m ²	8 BLAGOVAONICA - 16,13m ²	13 STUBIŠTE - 6,64m ²	18 GARDEROBA - 2,39m ²	
4 WC - 1,45m ²	9 DNEVNI BORAVAK - 20,18m ²	14 HODNIK - 5,94m ²	19 SOBA - 12,27m ²	
5 GOSP. - 4,522m ²	10 LOGGIA - 4,77m ²	15 KUPAONICA - 4,08m ²	20 SOBA - 12,93m ²	