

# STAN S6

## DVOETAŽNI

PRIZEMLJE

ORIJENTACIJA STANA

### DVOSTRANA / JI-SZ

NETO POVRŠINA  
ZATVORENOG DJELA

## 122,94m<sup>2</sup>

UKUPNA NETO POVRŠINA  
(zatvoreno + otvoreno s koeficijentom)

Loggia: 0,75

Natkriveni balkon / terasa: 0,50

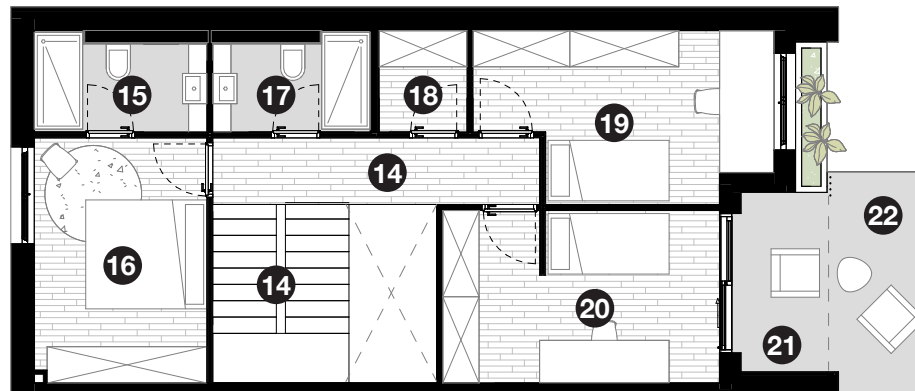
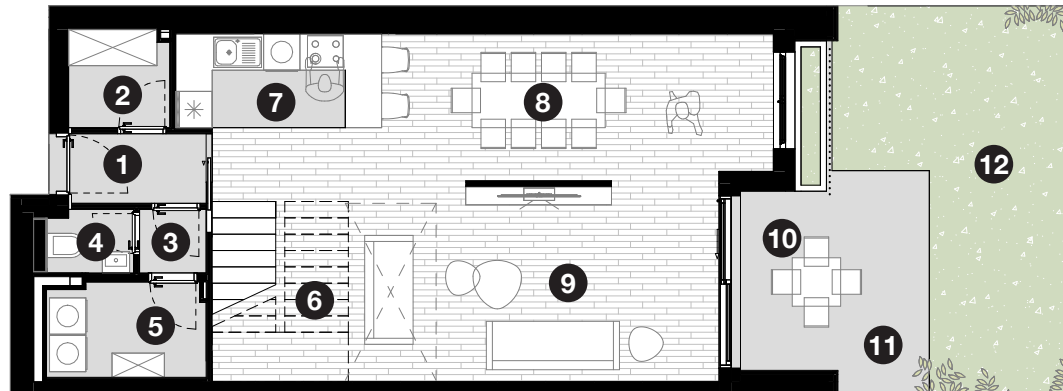
Nenatkriveni balkon / terasa: 0,25

Vrt: 0,10

## 140,17m<sup>2</sup>

BROJ SPAVAĆIH SOBA

### 3S



<b>1</b> ULAZ - 2,62m <sup>2</sup>	<b>6</b> STUB. - 9,24m <sup>2</sup>	<b>11</b> NAT. TERASA - 5,56m <sup>2</sup>	<b>16</b> SOBA - 11,450m <sup>2</sup>	<b>21</b> LOGGIA - 4,77m <sup>2</sup>
<b>2</b> GARDEROBA - 2,68m <sup>2</sup>	<b>7</b> KUHINJA - 5,27m <sup>2</sup>	<b>12</b> VRT - 59,06m <sup>2</sup>	<b>17</b> KUPAONICA - 3,95m <sup>2</sup>	<b>22</b> BALKON - 5,56m <sup>2</sup>
<b>3</b> HODNIK - 1,16m <sup>2</sup>	<b>8</b> BLAGOVAONICA - 16,14m <sup>2</sup>	<b>13</b> STUBIŠTE - 6,64m <sup>2</sup>	<b>18</b> GARDEROBA - 2,43m <sup>2</sup>	
<b>4</b> WC - 1,44m <sup>2</sup>	<b>9</b> DNEVNI BORAVAK - 20,27m <sup>2</sup>	<b>14</b> HODNIK - 5,94m <sup>2</sup>	<b>19</b> SOBA - 12,39m <sup>2</sup>	
<b>5</b> GOSP. - 4,04m <sup>2</sup>	<b>10</b> LOGGIA - 4,77m <sup>2</sup>	<b>15</b> KUPAONICA - 4,31m <sup>2</sup>	<b>20</b> SOBA - 12,93m <sup>2</sup>	